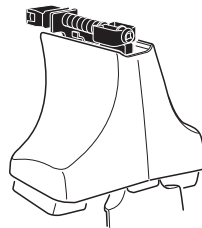


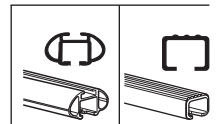
# Kit 1341

VOLVO S40, 4-dr Sedan, 04- / \*05-

\*North America



750



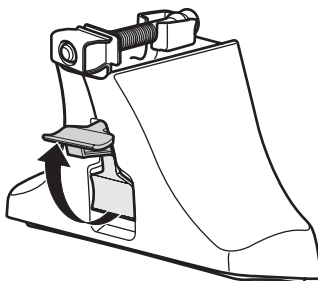
**THULE**<sup>®</sup>  
SWEDEN

ISO 11154-E

750

**Kit**

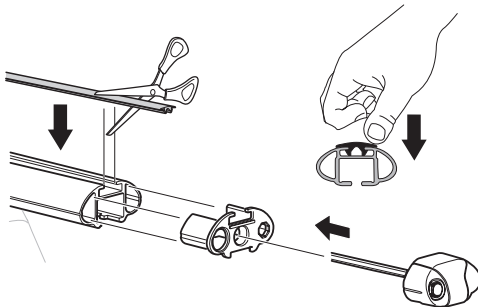
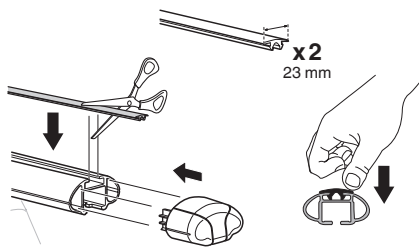
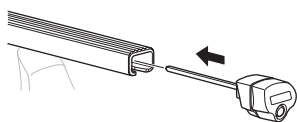
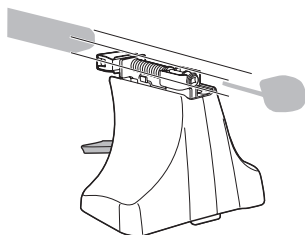
1



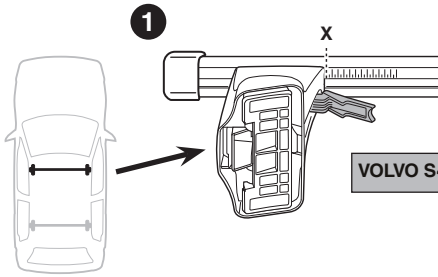
2



+

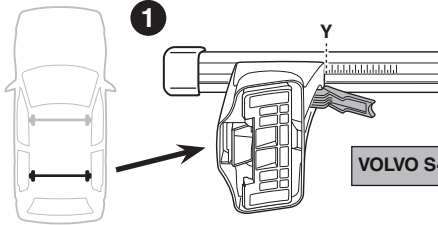


**3**



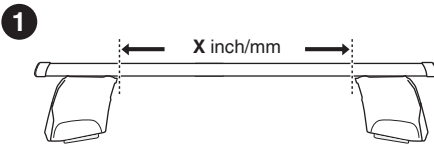
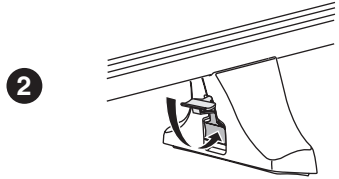
**VOLVO S40, 4-dr Sedan, 04- / \*05-**

**X**  
**41,5**



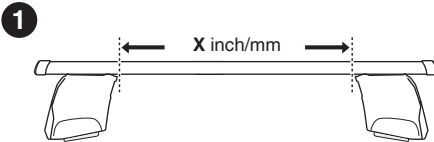
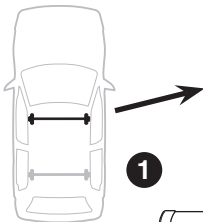
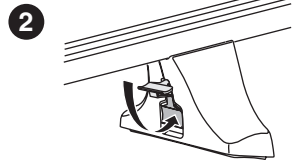
**VOLVO S40, 4-dr Sedan, 04- / \*05-**

**Y**  
**39,5**



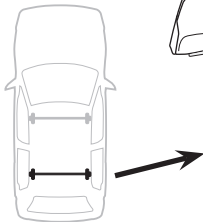
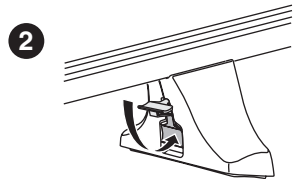
**VOLVO S40, 4-dr Sedan, 04- / \*05-**

X inch	X mm
42"	1066 mm



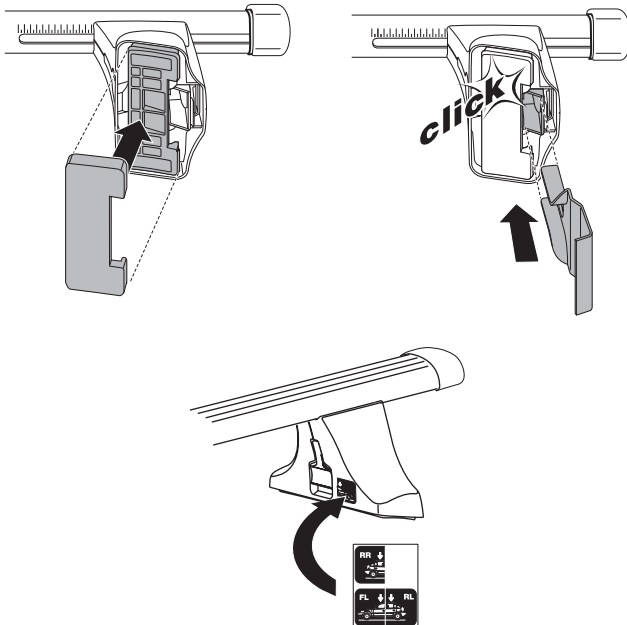
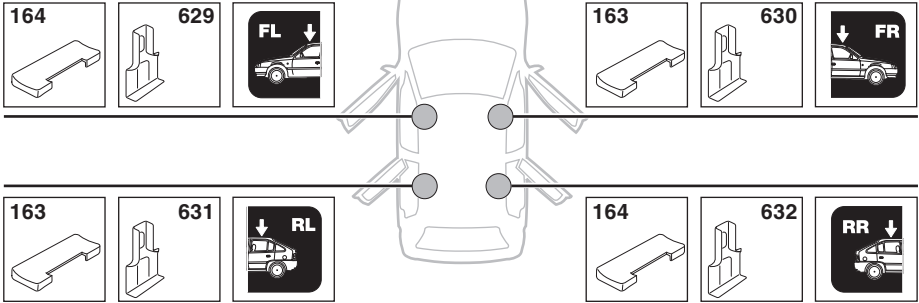
**VOLVO S40, 4-dr Sedan, 04- / \*05-**

Y inch	Y mm
41 1/8"	1046 mm

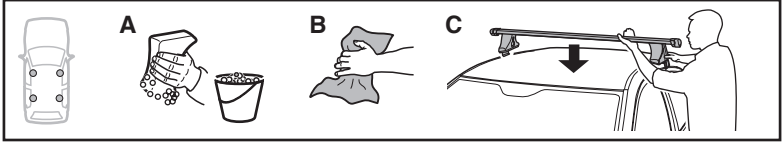


# 4

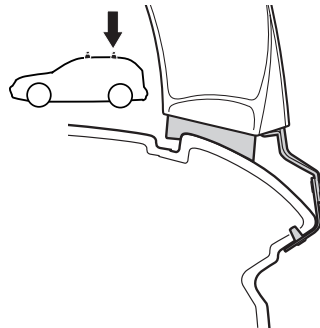
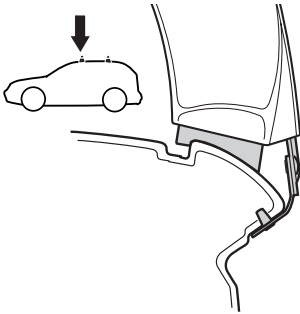
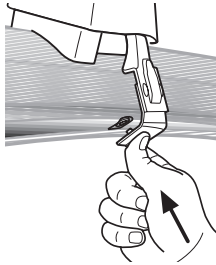
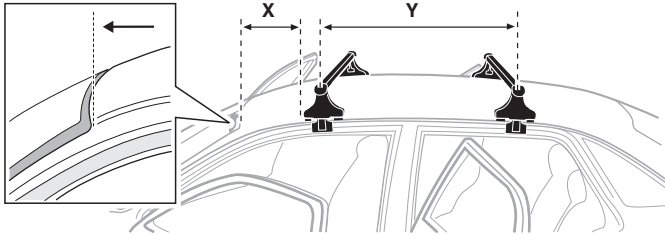
VOLVO S40, 4-dr Sedan, 04- / \*05-



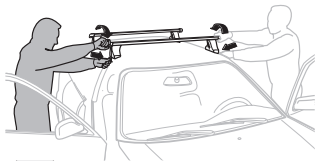
**5**



	X mm	Y mm	X inch	Y inch
<b>VOLVO S40, 4-dr Sedan, 04- / *05-</b>	<b>225 mm</b>	<b>830 mm</b>	<b>8 <sup>7</sup>/<sub>8</sub> "</b>	<b>32 <sup>5</sup>/<sub>8</sub> "</b>



6



GB/US Tighten alternately  
 D Die Schrauben abwechselnd anziehen  
 F Serrer alternativement chaque côté  
 NL Afwisselend aan de linker- en de rechterkant aandraaien  
 I Alternare il serraggio delle viti  
 E Apretar alternativamente  
 PT Aperte alternadamente  
 S Dra åt växelvis  
 FIN Kierrä vuorotellen  
 EST Pinguldage vaheldumisi  
 LAT Pievelciēt pamišus  
 LIT Užsukinėkite pakaitomis  
 PL Śruby dokręcaj naprzemiennie  
 RU Затягивайте попеременно

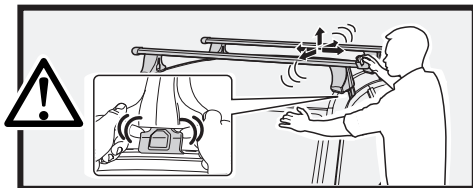
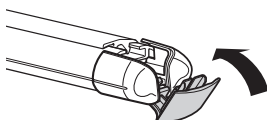
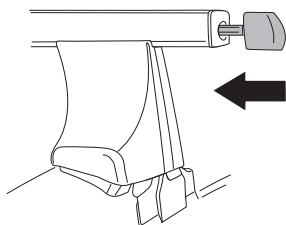
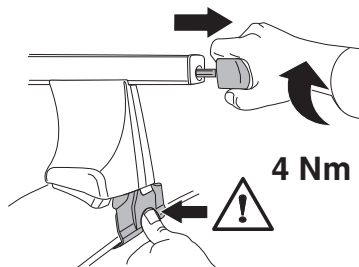
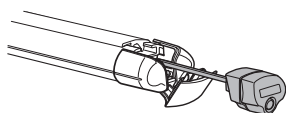
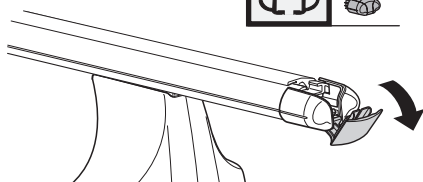
CZ Pokręťta bagażnika dokręcaj dokręcaj naprzemiennie.  
 SK Dofahujte striedavo  
 SLO Privijajte izmenično.  
 HR Naizmjenično zategnite  
 HU Egymástól fűggetlenül szorítandó  
 GR Σφιγγετε εναλλάξ  
 TR Dönüşümlü sıkın

中文 交替拧紧

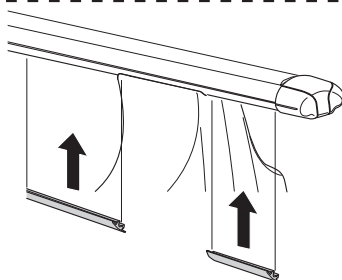
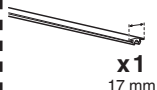
한국어 번갈아 가며 조이십시오.

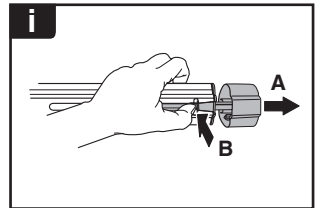
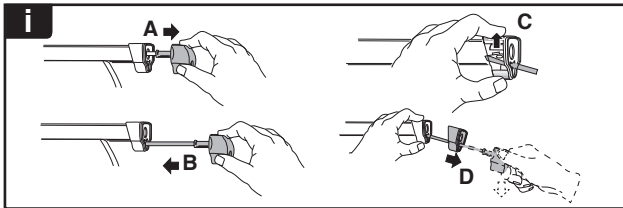
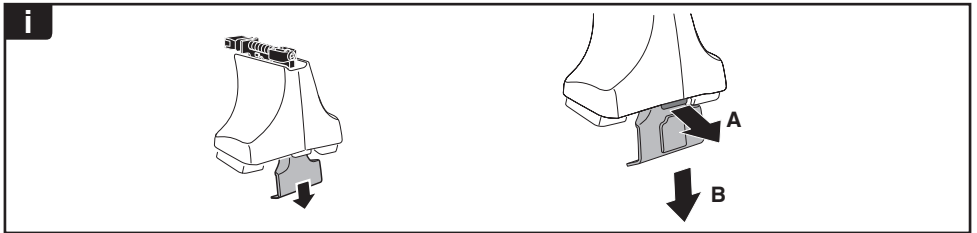
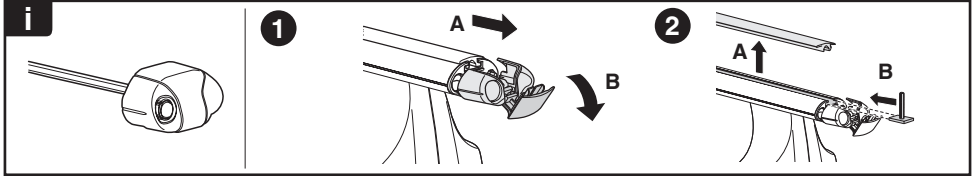
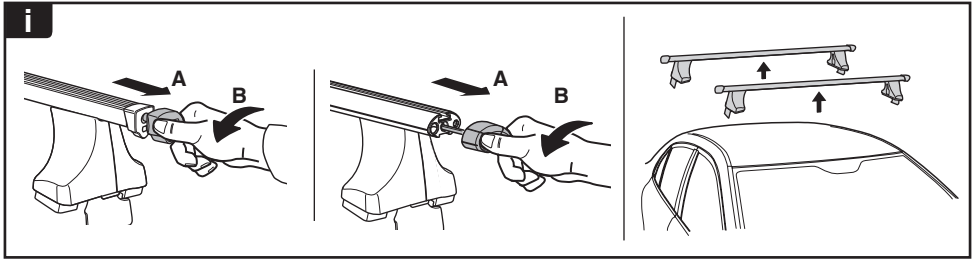
日本語 交互に締め付けてください。

ไทย ชันโน้มนับสลับ

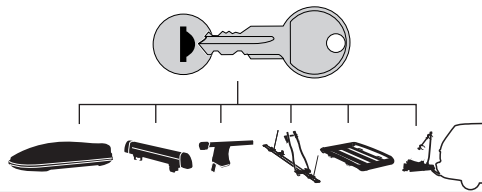








7





**THULE**  
SWEDEN  
**ONE  
KEY  
SYSTEM**



-  **544**  (x4)
- 596**  (x6)
- 588**  (x8)
- NA **510**  (x10)
- EUR **452**  (x12)
- ASIA

